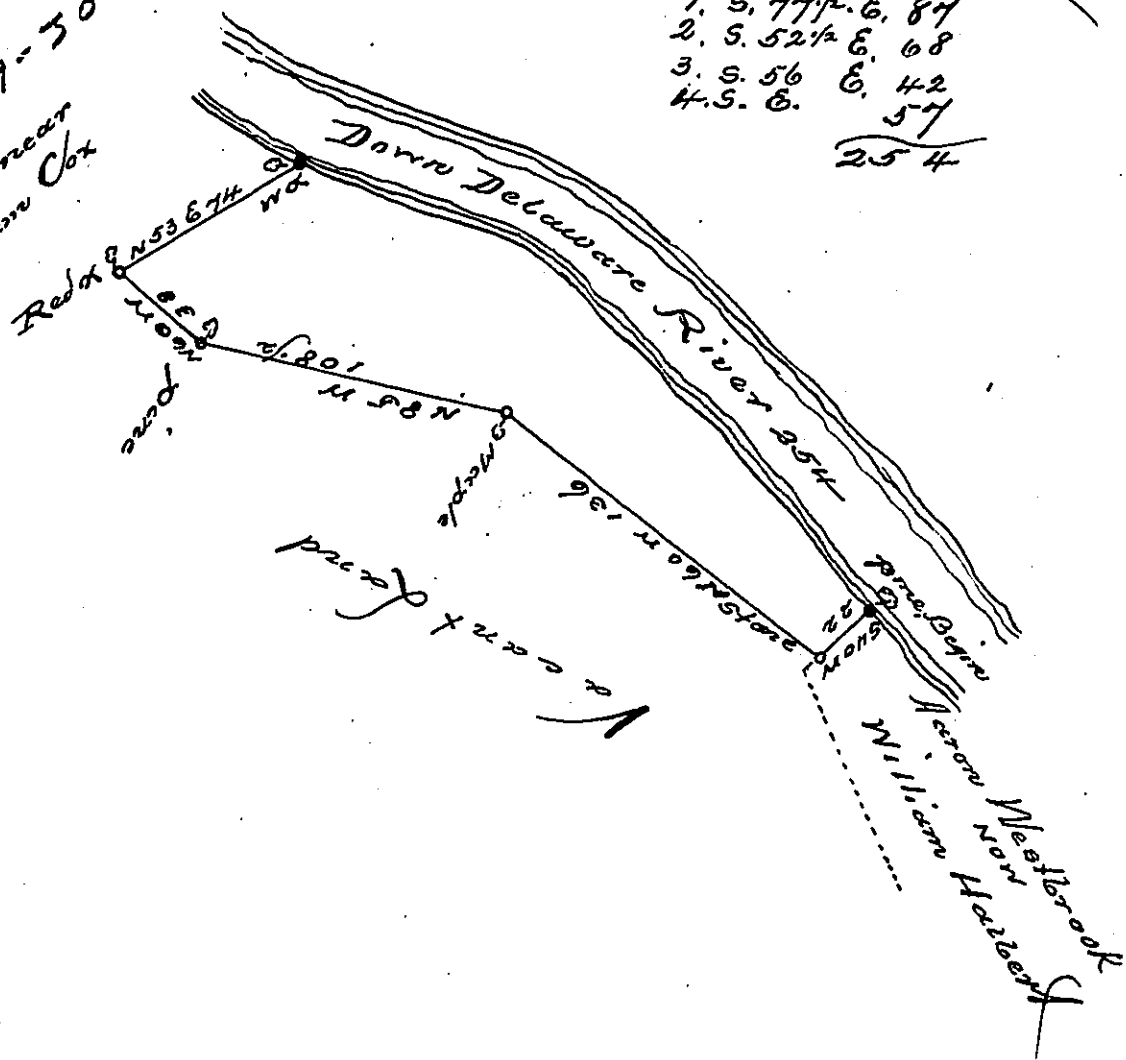


The bearing & distances down Delaware River

(179)

- 1. S. 77 1/2 E. 84
- 2. S. 52 1/2 E. 68
- 3. S. 56 E. 42
- 4. S. E. 57
- 254

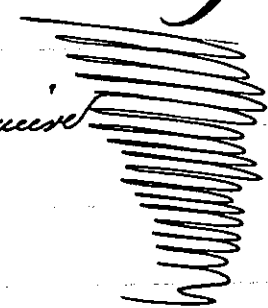
D-39-30
by or near
William Cox



By Virtue of a warrant dated the 1st July 1784. Surveyed the 6th November
 1784, to Lewis Rue the above described tract of land situate on the
 West side of Delaware River between Masthope Creek & Westalany
 in the County of Northampton. Containing seventy four Acres & quarters
 & the allowance of six sq. Cent &c.

p. Geo. Palmer D. J.

To Daniel Brodhead Esquire
 Surveyor General



IN TESTIMONY that the above is a copy of the original remaining on file in
 the Department of Internal Affairs of Pennsylvania, made
 conformably to an Act of Assembly approved the 16th day of
 February, 1833, I have hereunto set my Hand and caused
 the Seal of said Department to be affixed at Harrisburg,
 this Seventh day of March, 1899.

Jameal Pitta
 Secretary of Internal Affairs.